

Product Catalog

Wood Blocks Supports

DESCRIPTION

An INSULATION COMPONENT WOOD BLOCKS are used along with IC Saddles to ensure that the pipe insulation does not compress at each hanger location. (See IC Wood Block product data sheet)

FEATURES

- Choices of Hardwood or Pine wood Blocks - For use of best insulation support
- Each IC Block Bundled - to make for fast and easy handling
- Shipped along with IC Saddles - ships with saddles for freight allowance
- Heavy Duty Packaging with clear labeling - Improved, stronger packaging with label providing detailed information on size, style, pieces/ bundle, and pieces per carton.



APPLICATIONS

INSULATION COMPONENTS Wood Blocks are made to support pipe sizes ranging from 1/2" to 30" outside diameter. IC Blocks are for use on plumbing and HVAC mechanical piping systems with temperatures ranging from -120i to +350i °F.

NOTE:

When applied with the correct wood block (See IC Wood Block Product Data Sheet) IC Saddles are made to withstand 5 PSI compressive strength on a maximum span of 10 linear feet.

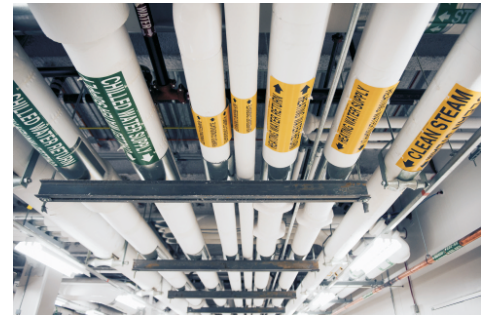
RECOMMENDED INSTALLATION INSTRUCTIONS

INSULATION COMPONENTS Wood Blocks are placed inside the pipe insulation at the hanger and IC Saddle location. Before applying the pipe insulation, simply notch out the insulation with a insulation knife and replace insulation piece with the appropriate sized wood block. (see sizing chart for recommended block size.) Proceed by applying the pipe insulation to the pipe and then inserting the appropriate IC Saddle.

ENGINEERING GUIDE SPECIFICATION

WHEREVER PIPE INSULATION PASSES THROUGH A HANGER LOCATION, THE IC WOOD BLOCK SUPPORT SHALL BE INSTALLED. ALSO EACH IC WOOD BLOCK SUPPORT SHALL BE EQUAL TO THE PIPE INSULATION THICKNESS.

SIZE	PCS/ BOX	PCS/ BUNDLE
1/2" x 1/2" x 5"	300	25
1/2" x 3/4" x 5"	200	20
1" x 1" x 6"	300	12
1-1/2" x 1" x 6"	200	9
1-1/2" x 1-1/2" x 6"	150	6
2" x 1-1/2" x 6"	120	4



Call: (574) 258-1885 / Fax 866-565-0359