

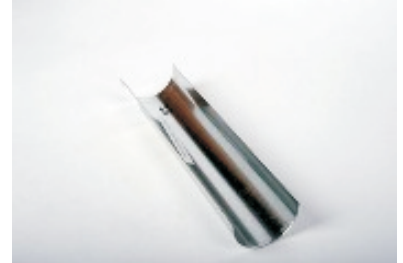
Straight Saddles

DESCRIPTION

An INSULATION COMPONENT Saddle is a 180 degree rounded piece of galvanized coated steel used to protect piping insulation from compressing at pipe hanger locations. It is suggested that wood blocks be used along with the saddle to guarantee the proper support. (See IC Wood Block product data sheet)

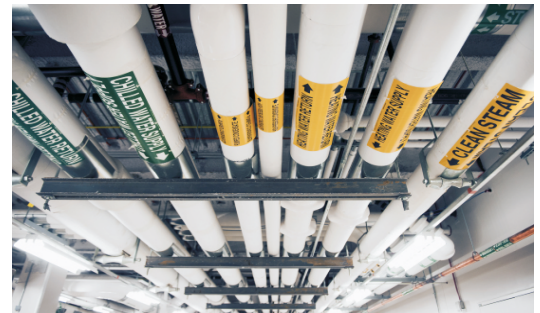
FEATURES

- Galvanized Finish - For superior rust proof protection.
- Each saddle marked with its outside diameter measurement - along with IC charts this guarantees the proper size saddle is used
- Heavy Duty Packaging with clear labeling - Improved, stronger packaging with label providing detailed information on diameter, gauge, length, and pieces per carton.



APPLICATIONS

INSULATION COMPONENTS Saddles are made for use on plumbing and HVAC mechanical piping systems with temperatures ranging from -120i to +500i F. IC Saddles are ideal for use on medium and low compressive strength pipe insulations and insulations which have a vapor barrier which is either field or factory applied. Such insulations include but are not limited to: rubber, polyethylene, fiberglass, urethane, Styrofoam and calcium silicate.



NOTE:

When applied with the correct wood block (See IC Wood Block Product Data Sheet) IC Saddles are made to withstand 5 PSI compressive strength on a maximum span of 10 linear feet.

RECOMMENDED INSTALLATION INSTRUCTIONS

Begin by lifting the appropriately sized IC Saddle upwards towards the insulated pipe to just outside the hanger location. Proceed by sliding the saddle underneath the hanger until the hanger is in the middle of the saddle.

ENGINEERING GUIDE SPECIFICATION

WHEREVER PIPE INSULATION PASSES THROUGH A HANGER LOCATION, THE IC GALVANIZED STEEL SADDLE SHALL BE INSTALLED. ALSO EACH SADDLE SHALL BE MARKED BY THE O.D. OF THE PIPE INSULATION.

